

Neil Kelly

This Kind of Blue

22 June – 27 July 2016

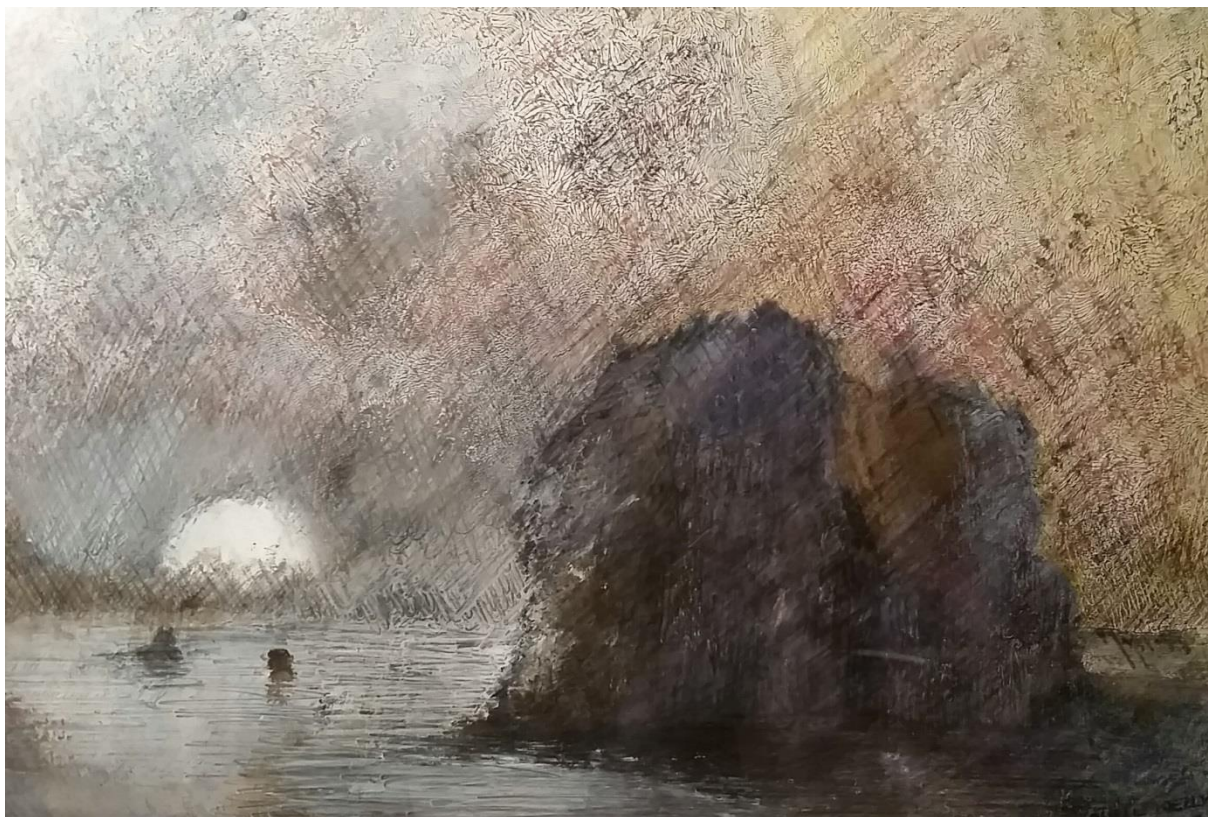
Neil Kelly works out of a studio in Mount Martha on the Mornington Peninsula.

A long career as a musician preceded his career as an artist. As such Kelly paints in the same way he composes music, compulsively seeking out new forms, new narratives and new situations.

Kelly's lighter works as well as those with darker themes are lent depth and strange poignancy by his experiments in media and form.

His practice of blending traditional mediums like oil, acrylic and watercolour with less conventional ones such as ball point pen ink and blue, brown, red and yellow food dye helps to give many of his works the unusual softness of reverie.

Loosely woven, open-ended and often mysterious narrative structures run through Kelly's work, and his keen sense of dramatic movement keeps viewers on edge.



Swimming in the Rain, 38 x 46cm, \$250

Moments of intimacy and intense beauty such as those represented in 'Swimming in the Rain' and 'Please Don't Go' are set alongside darker visions like 'A Grave Mistake' and 'The Bad Room' to create a diverse tableau of possibilities all set within a world constantly on the verge of becoming memory or disappearing like shadow into the unconscious.

Kelly cites the German-Danish Expressionist Emil Nolde as an artist who has influenced the way he thinks about artistic production.

Nolde famously wrote: 'There is silver blue, sky blue and thunder blue. Every colour holds within it a soul, which makes me happy or repels me, and which acts as a stimulus. To a person who has no art in him, colours are colours, tones tones ... and that is all. All their consequences for the human spirit, which range between heaven and hell, just go unnoticed.'

A diverse range of blues are apparent in many of Kelly's works, and they are always in motion, either dispersing or deepening, receding or approaching, thickening or fading according to the drama being enacted.



Muddy Waters, 38 x 46cm, \$250

YERING
Station

